

# CERTIFICATE OF LOCATION OF GOVERNMENT CORNER

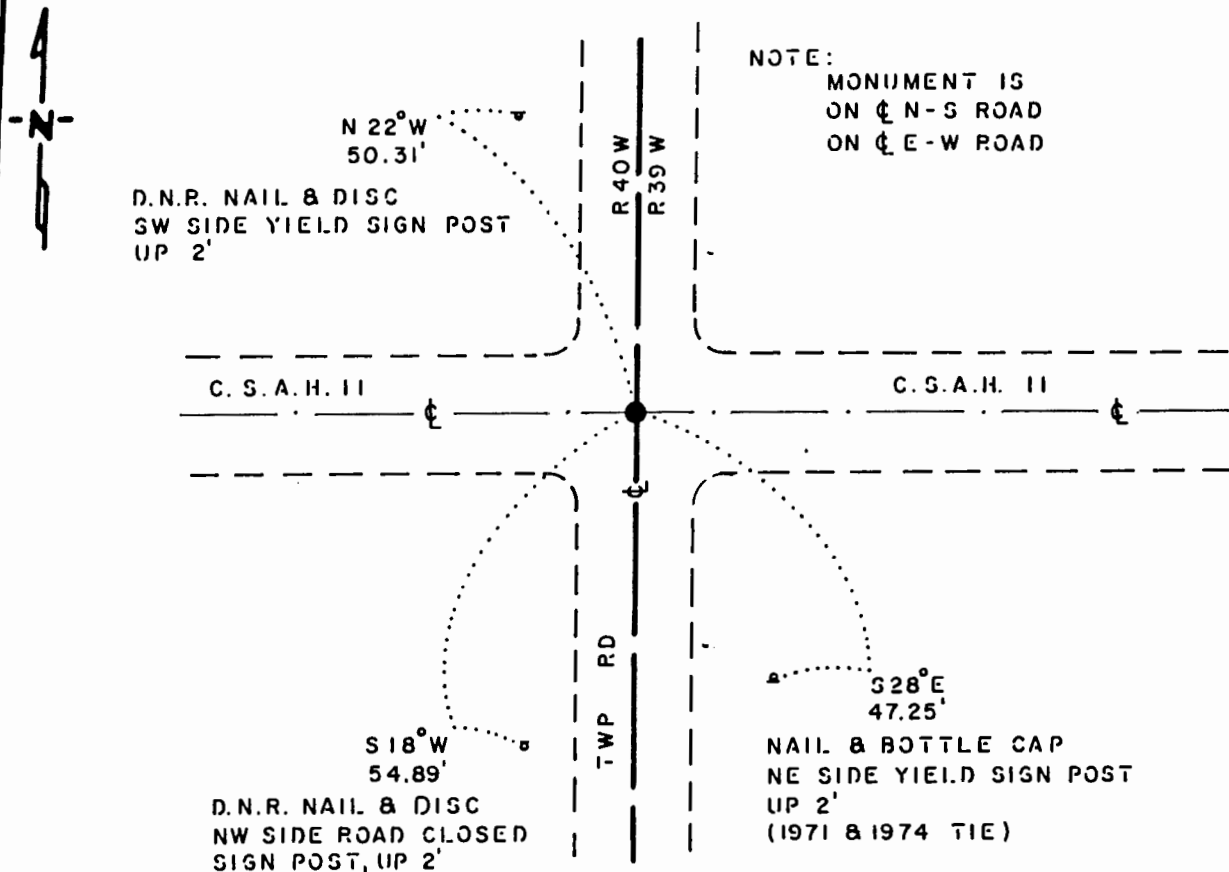
NORTHEAST Corner of Section 24, Township 107 N., Range 40 W, 5 th. P.M.

STATE OF MINNESOTA, County of MURRAY

At the corner location shown on the sketch:

- On 8-14-85 found a 3/4" x 12" REBAR, DOWN 0.2'
  - left monument as found,  lowered monument,  removed monument (explain)
- On 8-14-85 placed a 1 1/4" x 1 1/4" x 20" PERFORATED STEEL TUBE WITH ALUMINUM CAP STAMPED "D.N.R. SURVEY MARKER", DOWN 0.5'

### SKETCH OF REFERENCE TIES



### BEARINGS OBSERVED WITH COMPASS

Statement of evidence relative to this corner location is on back of page.

J. B. M. 9-12-85  
G-950

I hereby certify that this document and the data contained herein was prepared by me or under my direct supervision.

Lowell R. Pomeroy Jr. 10-9-85  
SIGNATURE DATE

Registration No. 17005

- Land Surveyor,  Professional Engineer
- County Surveyor,  County Engineer

### OFFICE OF THE COUNTY RECORDER

County of \_\_\_\_\_

I hereby certify that this document was filed in the Co. Recorders office at \_\_\_\_\_ M. on the \_\_\_\_\_ day of \_\_\_\_\_ A.D., 19\_\_

County Recorder \_\_\_\_\_

By \_\_\_\_\_, Deputy

DOCUMENT NO. \_\_\_\_\_

Northeast Corner Section 24, Township 107 North, Range 40 West

This corner was originally established by the U. S. General Land Office survey in 1861. The government notes show corner marked with a wood post set in mound of earth with pits and trench dug around the mound.

In March 1985, the DNR Bureau of Engineering contacted the Murray County Offices of the Recorder and Highway Engineer for corner information.

The following information was obtained from the Recorder's Office:

Surveyor's Record Book A, on Page 77, contains a survey made by J. W. Woolstencraft in October 1898. Survey shows a 12 inch by 12 inch by 36 inch stone at corner but does not indicate if found or set. This information is also contained in an old tie book in the Highway Engineer's Office.

Surveyor's Record Book A, on Page 205, contains a survey made by J. W. Woolstencraft in October 1907. Survey shows that the corner was found per a previous survey, 2634 feet from the east quarter corner of Section 13. Survey does not indicate what kind of monument was found at corner.

The following information was obtained from the DNR Bureau of Engineering's Office:

A 1964 survey shows that an iron pin was found at corner per Highway Engineer's information. The following ties are shown to corner:

top center east end, CMP, west-northwest, 201.60 feet  
nail and disc in blazed tree, southwest, 147.68 feet.  
2660.38 feet from the north quarter corner of Section 24  
2632.44 feet from the east quarter corner of Section 13  
2527.72 feet from the north quarter corner of Section 19  
2640.50 feet from the east quarter corner of Section 24

A 1971 survey shows that a spike was found at corner and replaced with a railroad spike. The following ties are shown to corner:

nail and bottle cap on east side of yield sign post, southeast, 47.10 feet  
nail and bottle cap on west side of yield sign post, north-northwest, 50.46 feet

A 1974 survey shows that a railroad spike was found at corner per 1971 survey. The following ties are shown to corner:

nail and bottle cap in yield sign post, southeast, 47.5 feet  
nail and bottle cap in yield sign post, northwest, 50.5 feet  
2528.03 feet from the north quarter corner of Section 19  
5272.90 feet from the southeast corner of Section 24

A 1976 survey shows that a railroad spike was found at the corner.

On July 2, 1985, the DNR Bureau of Engineering hired a backhoe operated by Larry Ruppert of Currie to dig for evidence of this corner. A 10 foot north-south by 10 foot east-west by 3.5 foot deep hole was dug, the center being the intersection of the center line of roads north, south, east, and west. A railroad spike was found down 0.1 of a foot over a 3/4 inch by 12 inch rebar down 0.5 of a foot and natural ground was encountered down 2.4 feet. Searched for and found record ties as shown on sketch of ties. The rebar was found to be:

2632.52 feet from the east quarter corner of Section 13  
2660.84 feet from the north quarter corner of Section 24

Accept the rebar as the location of the corner and replaced it with a DNR Survey Marker.

Traverse information is available from the DNR Bureau of Engineering.